

For CLL/SLL

CALQUENCE *and you*

What you need to
know about your
treatment for
CLL/SLL



Not an actual patient.

What is CALQUENCE?

CALQUENCE is a prescription medicine used to treat adults with chronic lymphocytic leukemia (CLL) or small lymphocytic lymphoma (SLL).

It is not known if CALQUENCE is safe and effective in children.

Please see Important Safety Information throughout and click here for full [Prescribing Information](#), including [Patient Information](#).



CALQUENCE[™]
acalabrutinib 100 mg tablets

• What you will find in this *booklet*

Fighting CLL/SLL with CALQUENCE

This booklet will introduce you to some of the important things you'll want to know about your treatment—like how CALQUENCE is designed to treat your cancer, what you can expect from treatment, and what's important to talk about with your doctor.

What is CALQUENCE	Page 3
How to take CALQUENCE	Page 4
Possible side effects	Page 6
Financial support	Page 8
Patient resources	Page 10
Tips for caregivers	Page 11

Important Safety Information About CALQUENCE® (acalabrutinib)

Before taking CALQUENCE, tell your healthcare provider about all of your medical conditions, including if you:

- have had recent surgery or plan to have surgery. Your healthcare provider may stop CALQUENCE for any planned medical, surgical, or dental procedure.
- have bleeding problems.
- have or had heart rhythm problems.
- have an infection.
- have or had liver problems, including hepatitis B virus (HBV) infection.
- are pregnant or plan to become pregnant. CALQUENCE may harm your unborn baby and cause problems during childbirth (dystocia).
 - If you are able to become pregnant, your healthcare provider may do a pregnancy test before you start treatment with CALQUENCE
 - Females who are able to become pregnant should use effective birth control (contraception) during treatment with CALQUENCE and for 1 week after the last dose of CALQUENCE

What is CALQUENCE

CALQUENCE is a targeted BTKi

CALQUENCE is an oral, targeted treatment designed to slow the growth and spread of CLL/SLL cancer cells without chemo.*

- Bruton tyrosine kinase (BTK) inhibitors, like CALQUENCE, target and help block BTK
- Blocking BTK helps reduce the growth and survival of cancerous B-cells (a type of white blood cell)
- CALQUENCE blocks 95% or more of BTK through twice-daily oral dosing†



Find out about the Safety and Efficacy of CALQUENCE [here](#).

*CALQUENCE works differently than traditional chemotherapy.

†The significance of blocking 95% or more of BTK on treatment responses has not been established.
BTKi-Bruton tyrosine kinase inhibitors

Important Safety Information (cont'd)

Before taking CALQUENCE, tell your healthcare provider about all of your medical conditions, including if you: (cont'd)

- are breastfeeding or plan to breastfeed. It is not known if CALQUENCE passes into your breast milk. Do not breastfeed during treatment with CALQUENCE and for 2 weeks after your last dose of CALQUENCE.

Tell your healthcare provider about all the medicines you take, including prescription and over-the-counter medicines, vitamins, and herbal supplements. Taking CALQUENCE with certain other medications may affect how CALQUENCE works and can cause side effects. Especially tell your healthcare provider if you take a blood thinner medicine.

Please see Important Safety Information throughout and click here for full [Prescribing Information](#), including [Patient Information](#).

**CALQUENCE**
acalabrutinib 100 mg tablets

How to take CALQUENCE

CALQUENCE is easy to take at home or on the go.

You can help control your CLL/SLL by taking CALQUENCE regularly, approximately every 12 hours every day.



Swallow tablet whole with a glass of water. Do not chew, crush, dissolve, or cut tablets



Flexibility to take with or without food



Take one 100 mg tablet by mouth approximately every 12 hours

Take CALQUENCE as directed by your doctor.

Dosage tips

- If you miss a dose of CALQUENCE, take it as soon as you remember
 - If it's more than 3 hours past your usual dosing time, skip the missed dose and take your next dose of CALQUENCE at your regularly scheduled time
 - Do not take an extra dose to make up for missing one
- If you take too much CALQUENCE, call your doctor or go to the nearest hospital or emergency room right away
- Tablets have replaced capsules and should not be interchanged or taken together at the same time



CALQUENCE has changed from capsules to tablets to allow it to also be taken by people who need to take stomach acid-reducing medications, like Prilosec® or Nexium®.

Staying on track is important

It's crucial to follow your doctor's instructions and not miss doses. Missing doses may negatively impact your treatment goals. Please talk with your doctor before doing or changing anything. Here are some tips to help you remember to take CALQUENCE twice a day:



Not actual patients.



Set 2 separate alarms—like 8 AM and 8 PM—for the times you're supposed to take CALQUENCE



Use a calendar to help keep track of dosing times



Associate taking your medications with a routine like brushing your teeth



Use a pillbox to ensure you don't take the wrong amount or forget you already took it

Important Safety Information (cont'd)

How should I take CALQUENCE?

- Take CALQUENCE exactly as your healthcare provider tells you to take it.
- Do not change your dose or stop taking CALQUENCE unless your healthcare provider tells you to.
- Your healthcare provider may tell you to decrease your dose, temporarily stop, or completely stop taking CALQUENCE if you develop certain side effects.
- Take CALQUENCE 2 times a day (about 12 hours apart).
- Take CALQUENCE with or without food.
- Swallow CALQUENCE tablets whole with a glass of water. Do not chew, crush, dissolve, or cut tablets.
- If you miss a dose of CALQUENCE, take it as soon as you remember. If it is more than 3 hours past your usual dosing time, skip the missed dose and take your next dose of CALQUENCE at your regularly scheduled time. Do not take an extra dose to make up for a missed dose.

Please see Important Safety Information throughout and click here for full [Prescribing Information](#), including [Patient Information](#).

**CALQUENCE**
acalabrutinib 100 mg tablets

• Possible side effects

Side effects may happen

Side effects may occur with CALQUENCE, but learning about them early may help you identify them and manage some of them at home. Remember to always tell your doctor about any side effects you experience, especially if side effects are severe, or if they don't go away or get worse.

The most common side effects of CALQUENCE (and tips on how to manage them) include:



Headache

- Can usually occur within 30 minutes of dosing and typically can be managed with acetaminophen (like Tylenol®) or caffeine
- Typically resolves over a period of 4 weeks



Diarrhea

- Drink plenty of fluids. Eat smaller, more frequent, and easier-to-digest meals, and avoid spicy foods
- Talk with your doctor about taking an antidiarrheal medication (like Imodium®)



Muscle and joint pain

- Consider mild stretching in order to relax and ease aches
- Take pain medication as prescribed and discuss other treatments such as massage or physical therapy with your doctor



Upper respiratory tract infection

- Wash hands with soap and water thoroughly and often
- Tell your doctor right away if you have any signs or symptoms of an infection (fever, chills, or flu-like symptoms)



Bruising

- Elevate and ice the affected area to reduce swelling and ease tenderness



Fatigue

- Ensure adequate nighttime sleep and take short naps early in the day if needed
- Meditate, read, or listen to music to help relieve stress
- Engage in moderate exercise, such as walking or stretching (consult your doctor before starting any exercise plan)

These are not all of the possible side effects of CALQUENCE. Always tell your doctor about any side effects you experience, especially if side effects are severe, or if they don't go away or get worse.

Are there any side effects associated with heart health?

♥ Adults with CLL/SLL and other health conditions should talk to their doctor about the right therapy for them.

Information collected from 4 clinical trials in CLL patients who had received at least 1 dose of CALQUENCE alone showed there were **low rates of high blood pressure/hypertension** (9%, or 67 out of 762 patients) **and heart rhythm issues, such as atrial fibrillation/flutter** (5%, or 38 out of 762 patients). Overall, 129 out of 762 patients in the clinical trials had cardiac adverse events; 117 of these 129 patients had at least one prior cardiovascular risk factor.

Important Safety Information (cont'd)

What are the possible side effects of CALQUENCE?

CALQUENCE may cause serious side effects, including:

- **Serious infections** can happen during treatment with CALQUENCE and may lead to death. Your healthcare provider may prescribe certain medicines if you have an increased risk of getting infections. Tell your healthcare provider right away if you have any signs or symptoms of an infection, including fever, chills, or flu-like symptoms.
- **Bleeding problems (hemorrhage)** can happen during treatment with CALQUENCE and can be serious and may lead to death. Your risk of bleeding may increase if you are also taking a blood thinner medicine. Tell your healthcare provider if you have any signs or symptoms of bleeding, including blood in your stools or black stools (looks like tar), pink or brown urine, unexpected bleeding or bleeding that is severe or you cannot control, vomit blood or vomit that looks like coffee grounds, cough up blood or blood clots, dizziness, weakness, confusion, changes in your speech, headache that lasts a long time, or bruising or red or purple skin marks.
- **Decrease in blood cell counts.** Decreased blood counts (white blood cells, platelets, and red blood cells) are common with CALQUENCE, but can also be severe. Your healthcare provider should do blood tests to check your blood counts regularly during treatment with CALQUENCE.
- **Second primary cancers.** New cancers have happened in people during treatment with CALQUENCE, including cancers of the skin or other organs. Your healthcare provider will check you for skin cancers during treatment with CALQUENCE. Use sun protection when you are outside in sunlight.

Please see Important Safety Information throughout and click here for full [Prescribing Information](#), including [Patient Information](#).


CALQUENCE[®]
acalabrutinib 100 mg tablets

Financial support

COMMERCIALLY INSURED

CALQUENCE CO-PAY SAVINGS PROGRAM



Patients may pay as little as \$0 per month for CALQUENCE. There are no income requirements to participate in the program.

For more information and eligibility requirements, visit [this website](#).

*Terms and conditions apply. See site for full eligibility and terms of use.

GOVERNMENT INSURED OR UNINSURED



INDEPENDENT FOUNDATIONS

AstraZeneca Access 360™ can provide information about independent charitable patient assistance foundations that may be able to help you with out-of-pocket costs. However, Access 360 does not guarantee support by independent foundations.

For more information and a list of foundations, call Access 360 or visit [this website](#).



AZ&ME™ PRESCRIPTION SAVINGS PROGRAM

AZ&ME provides AstraZeneca medicines at no cost to qualifying people.

For more information, call **1-800-AZandMe** (1-800-292-6363) or visit [this website](#).



If AstraZeneca medicines have been prescribed, the Access 360 program can answer questions about:



Insurance coverage for your medicine



Your out-of-pocket costs



Affordability options

To learn more, please call **1-844-ASK-A360 (1-844-275-2360)**, Monday through Friday, 8 AM - 6 PM ET or visit [this website](#).



Not an actual patient.

Important Safety Information (cont'd)

What are the possible side effects of CALQUENCE? (cont'd)

- **Heart rhythm problems (atrial fibrillation and atrial flutter)** have happened in people treated with CALQUENCE. Tell your healthcare provider if you have any of the following signs or symptoms: fast or irregular heartbeat, dizziness, feeling faint, chest discomfort, or shortness of breath.

The most common side effects of CALQUENCE include headache, diarrhea, muscle and joint pain, upper respiratory tract infection, and bruising.

These are not all the possible side effects of CALQUENCE. Call your doctor for medical advice about side effects. You may report side effects to FDA at 1-800-FDA-1088.

Please see Important Safety Information throughout and click here for full [Prescribing Information](#), including [Patient Information](#).

CALQUENCE
acalabrutinib 100 mg tablets

• Patient *resources*

Support when you need it

The CALQUENCE™ Cares program provides ongoing education and support to help you get started and stay on track with your CALQUENCE treatment.

Sign up today to receive:

- A free patient starter kit with a wall calendar, pillbox, and more
- Emails and mailers with helpful information about living with CLL/SLL and managing treatment



Scan this QR code with your phone's camera or visit [this website](#) to sign up today.

Peer support

Having access to a support network is crucial while on treatment. The CALQUENCE™ Connections Facebook Group is an exclusive community for patients and their caregivers to guide and assist each other throughout treatment.



Scan this QR code with your phone's camera or visit [this website](#) to join today.



Not actual patients.

• *Tips* for Caregivers



Maintain daily routines whenever possible, which can help daily life feel as normal as possible.



Plan fun activities that both you and the person you care for enjoy doing together.



Encourage the person you care for to open up about how they're feeling by asking "what" they're feeling (instead of "how" they're feeling).



Be open about your feelings too and don't be afraid of doing so. Talk about your concerns, and keep in mind that you're a team that's in this together.



Respect your loved one's right to make decisions about their own life, including if they decide not to discuss all parts of their condition with you.

Join Today



By joining CALQUENCE™ Cares, CALQUENCE patients will receive a free CALQUENCE patient starter kit, complete with tools to help you stay on track with taking your medicine, such as a wall calendar, pill box and more. You'll also receive CALQUENCE™ Cares emails with resources and support information.



Please enter your information.

First Name _____

Last Name _____

Email Address _____

Address _____

City _____ State _____ ZIP _____

Which best describes you?

- I was prescribed CALQUENCE® (acalabrutinib)
- A friend or family member was prescribed CALQUENCE

AstraZeneca respects your personal health information. The information you provide may be used to send you health-related materials and to develop products, services, and programs. AstraZeneca, or third parties working on our behalf, will not sell or rent personal health information. If, in the future, you no longer want to receive health-related materials, call 1-800-236-9933.

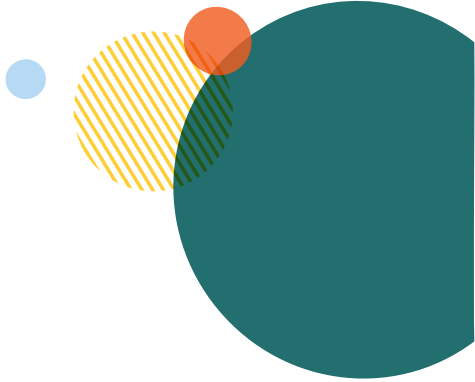
Please visit www.azprivacynotice.com to review our Privacy Notice.



POSTAGE WILL BE PAID BY ADDRESSEE
ASTRAZENECA
PO BOX 4713
TRENTON NJ 08650-8998



Not an actual patient.



What is CALQUENCE?

CALQUENCE is a prescription medicine used to treat adults with chronic lymphocytic leukemia (CLL) or small lymphocytic lymphoma (SLL).

It is not known if CALQUENCE is safe and effective in children.

Important Safety Information About CALQUENCE® (acalabrutinib)

Before taking CALQUENCE, tell your healthcare provider about all of your medical conditions, including if you:

- have had recent surgery or plan to have surgery. Your healthcare provider may stop CALQUENCE for any planned medical, surgical, or dental procedure.
- have bleeding problems.
- have or had heart rhythm problems.
- have an infection.
- have or had liver problems, including hepatitis B virus (HBV) infection.
- are pregnant or plan to become pregnant. CALQUENCE may harm your unborn baby and cause problems during childbirth (dystocia).
 - If you are able to become pregnant, your healthcare provider may do a pregnancy test before you start treatment with CALQUENCE
 - Females who are able to become pregnant should use effective birth control (contraception) during treatment with CALQUENCE and for 1 week after the last dose of CALQUENCE
- are breastfeeding or plan to breastfeed. It is not known if CALQUENCE passes into your breast milk. Do not breastfeed during treatment with CALQUENCE and for 2 weeks after your last dose of CALQUENCE.

Tell your healthcare provider about all the medicines you take, including prescription and over-the-counter medicines, vitamins, and herbal supplements. Taking CALQUENCE with certain other medications may affect how CALQUENCE works and can cause side effects. Especially tell your healthcare provider if you take a blood thinner medicine.

How should I take CALQUENCE?

- Take CALQUENCE exactly as your healthcare provider tells you to take it.
- Do not change your dose or stop taking CALQUENCE unless your healthcare provider tells you to.
- Your healthcare provider may tell you to decrease your dose, temporarily stop, or completely stop taking CALQUENCE if you develop certain side effects.
- Take CALQUENCE 2 times a day (about 12 hours apart).
- Take CALQUENCE with or without food.
- Swallow CALQUENCE tablets whole with a glass of water. Do not chew, crush, dissolve, or cut tablets.
- If you miss a dose of CALQUENCE, take it as soon as you remember. If it is more than 3 hours past your usual dosing time, skip the missed dose and take your next dose of CALQUENCE at your regularly scheduled time. Do not take an extra dose to make up for a missed dose.

What are the possible side effects of CALQUENCE?

CALQUENCE may cause serious side effects, including:

- **Serious infections** can happen during treatment with CALQUENCE and may lead to death. Your healthcare provider may prescribe certain medicines if you have an increased risk of getting infections. Tell your healthcare provider right away if you have any signs or symptoms of an infection, including fever, chills, or flu-like symptoms.
- **Bleeding problems (hemorrhage)** can happen during treatment with CALQUENCE and can be serious and may lead to death. Your risk of bleeding may increase if you are also taking a blood thinner medicine. Tell your healthcare provider if you have any signs or symptoms of bleeding, including blood in your stools or black stools (looks like tar), pink or brown urine, unexpected bleeding or bleeding that is severe or you cannot control, vomit blood or vomit that looks like coffee grounds, cough up blood or blood clots, dizziness, weakness, confusion, changes in your speech, headache that lasts a long time, or bruising or red or purple skin marks.
- **Decrease in blood cell counts.** Decreased blood counts (white blood cells, platelets, and red blood cells) are common with CALQUENCE, but can also be severe. Your healthcare provider should do blood tests to check your blood counts regularly during treatment with CALQUENCE.
- **Second primary cancers.** New cancers have happened in people during treatment with CALQUENCE, including cancers of the skin or other organs. Your healthcare provider will check you for skin cancers during treatment with CALQUENCE. Use sun protection when you are outside in sunlight.
- **Heart rhythm problems (atrial fibrillation and atrial flutter)** have happened in people treated with CALQUENCE. Tell your healthcare provider if you have any of the following signs or symptoms: fast or irregular heartbeat, dizziness, feeling faint, chest discomfort, or shortness of breath.

The most common side effects of CALQUENCE include headache, diarrhea, muscle and joint pain, upper respiratory tract infection, and bruising.

These are not all the possible side effects of CALQUENCE. Call your doctor for medical advice about side effects. You may report side effects to FDA at 1-800-FDA-1088.

Please see [click here for full Prescribing Information, including Patient Information.](#)



CALQUENCE[®]
acalabrutinib 100 mg tablets

More awaits you at
CALQUENCE.com



Not actual patients.

**Do you have questions about CALQUENCE? Call 1-800-236-9933.
For medical advice, contact your healthcare provider.**

AstraZeneca 

CALQUENCE is a registered trademark and AstraZeneca Access 360 and AZ&Me are trademarks of the AstraZeneca group of companies. ©2023 AstraZeneca. All rights reserved. US-75195 Last Updated 6/23